



The Macarthur Beekeeper

October 2020

Views expressed in the newsletter do not necessarily represent the views of the committee, the members, or the Association

WHAT'S INSIDE

- ★ President's Update
- ★ Welcome Newbees
- ★ Christmas Dinner
- ★ Apiary Goings On
- ★ Meet Our Club Officers
- ★ Guest Speaker
- ★ Bee Informed
- ★ Beekeeper's Puzzle
- ★ Meetings & Events
- ★ Classifieds & Sponsorship

USEFUL LINKS

MBA Website:

<https://macarthur.beekeepers.asn.au>

MBA Public Facebook:

<https://facebook.com/machbeekeepers>

MBA Members Only Group:

<facebook.com/groups/machbeekeepermembers>



PRESIDENT'S UPDATE

G'Day all.

We continue to adhere to the legislative requirements on COVID-19 restricting the number of participants at our Field Days to 20. Please note these are proving extremely popular with the numbers maxing out very quickly so get in early. Our Club meetings now also include a combination of Face to Face (via pre-registration) at the Macarthur Centre for Sustainable Living and online via Google Meet. Those who attended the Face to Face option last month walked away with some fun mystery prizes for making the effort to turn up. Mark Page, Biosecurity Officer from the NSW DPI was a very popular speaker at the September meeting with a great follow up Q&A session after his presentation on the Biosecurity Code of Practice. For October, our guest speaker is Professor Andrew Barron from Macquarie University, Sydney, who will be discussing, "The Hard Life of the honey bee forager". Having looked at his profile I am confident his topic will be very interesting, so please make the effort to join us.

The Club is no longer managing a local club based Swarm Collector List. Instead, members who are interested in advertising as swarm collectors are encouraged to complete registration supplying their contact details on the NSW ABA Swarm Collectors Portal. You can access the portal here <https://www.beekeepers.asn.au/swarms>. Upon registering members can nominate the postcodes they are prepared to collect swarms from, provide additional details on potential costs, their willingness to perform other services such as Cut-Outs or Trap-Outs etc. This change has been initiated as having people listed on two separate lists was proving confusing to the general public when seeking prompt assistance in swarm collection.

Continues on Page 2...

The Swarm Collector links on the Club Website and Facebook page have been updated to automatically direct those seeking swarm assistance to the NSW ABA Swarm Collectors portal.

Still on the topic of swarms, the Club is currently drafting a system to allow club members to formally list a desire to purchase Swarms, NUC's etc. from other members. I need to make it clear these purchases will not be from the Club; the purchases will be a transaction between individual club members. The intent of the formalised system will hopefully improve the link between those who collect swarms, establish NUCs etc. and those wanting to purchase them. The guidelines will establish a recommended fair price in order to avoid people offering to undercut sales from others. We will also be encouraging those selling to also offer an additional service of assisting new beekeepers with the installation of swarms or NUC's into the new owners hives. Details soon.



Club Christmas Dinner - I am currently coordinating arrangements with the Fat Cat Cafe in Camden to host the Club's Annual Christmas Dinner on the evening of Saturday November 21st. 6:00 - 9:00 pm. (Last year's venue was unavailable due to COVID-19 space constraints.) We will enjoy a two course, alternating set menu, with the additional option to pre request a vegetarian alternative. We will use a pre-registration system similar to the Field Days. Cost will be in the order of \$25 per person and paid prior to the event. Watch your email for pre-registration details and come prepared to ask questions for clarification at the October Club meeting.

Spring is well and truly here! For most our hives are in full swing and there have been a high number of swarms also being reported. The Queen's egg production should be at her peak; brood nest should be growing with a visible increase in bee numbers. Still time for you to initiate a split, an increasing number of drones at the hive entrance is a fair indicator of potential swarm preparation. There are still some strange cold nights but the warmer weather, an abundance of nectar and pollen are good conditions for raising new colonies. Unsure of what to do, ask your fellow beekeepers as after all that's what our club is for.

Happy Beekeeping!

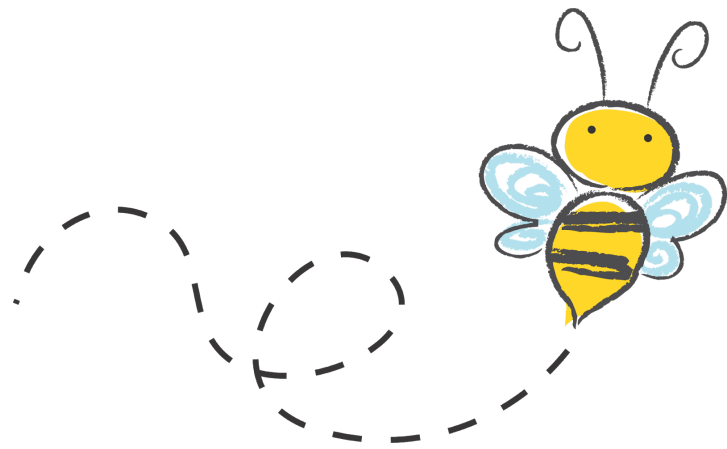
Ed



WELCOME NEWBEEES

Welcome to our latest members!

Ainsley Boyle
Debbie Gibson
Taskin Aslan
Lupco Gouganovski
Merryn Connolly
Nikolay Goncharov
Trevor Turner
Mary Daher



CHRISTMAS DINNER

Where: Fat Cat Cafe Camden

When: Sat. November 21st, 18:00 - 21:00

Cost: \$25 per person.

Menu: Alternating set menu

Entree; Bruschetta - Crumbed Mushroom Main; Beef Cheeks, garlic mash, honey carrots & jus - Parmy chips and salad. Vegetarian option: Vegetarian Lasagna.

Sparkling water on all tables, other drinks at individual's expense.



The numbers are limited so pre registration and confirmation of successful registration is essential. Pre-registration and payment details will be circulated via email. As is our practice, everyone who attends on the night receives a lucky number door prize.

I do hope to see you there!

Ed

Fat Cat wine bar's cozy yet bustling atmosphere and friendly staff has served the Camden neighborhood since 2015.

The café/bar is now the vision of the Cavaleri family, long time locals who along with Chef Aaron set out to present a fresh approach on ethnic inspired tapas & meals with fresh ingredients, clean flavors & modern touches to be shared amongst friends in an unpretentious setting.

Village Lane's beverage list is a thoughtfully curated list of Australian and European wines & beers, with a selection of craft spirits and cocktails to enhance guests' experience.

The wine list highlights many unknown wines, and honors these wineries' dedication and hard work in their vineyards. They are wines with soul; some show restraint, while others boast bold flavors, but above all else they all tell the stories of these wineries. The cocktail list features fun and innovative twists on timeless classics.

APIARY GOINGS ON

October Field Day

It was a glorious sunny Saturday morning at the Apiary and all who attended said they had a great day of education and social interaction. As is our approach with COVID-19 we split into two smaller groups alternating between time in the actual apiary and time in the lawn area outside.



In the Apiary

As this was my first field day as Apiary Officer in the October Field Day, I introduced myself and also explained a bit about my background as a Beekeeper.

Second, we explained the safety measures when approaching & working with bees. (Do not stand in front of the beehive entrance, as a golden rule) As we are coming out of winter into Spring, we checked two of the club's hives.

Hive number 7, a hive I knew to be queen less. We explained what to look for in a hive and discussed how you can detect a queen less beehive especially when coming out of winter. We discuss what should be done to return that hive to strength.

Hive number 1, a double brood box hive, very strong, plenty of bees with a good laying pattern, we could see larvae and capped brood, also spotted the queen. We explained what management must be done coming out of winter to ensure we have a good flow and honey season. We did see a few Small Hive Beetles (SHB), and discussed the best methods to control them (It's my first season with SHB). This was a follow on the discussions on SHB last month.

On the Grass

Many in the club are eagerly awaiting the arrival of their first bees. While one group was exploring bee hives in the Apiary our second group was learning how to introduce a package of bees into a new box. Ed demonstrated two alternative methods, the conventional "tip it over and dump em in", and a more gentle approach using a second box positioned above the frames and letting the bees walk out of the package onto the lower frames to join their queen. We covered details of the equipment needed including the actual 'package', the queen cage and food source it contains, and what to do with your new bee boxes in preparation prior to adding bees.

In addition to the actual process of transferring bees into the new box we also discussed the timeline of key activities after the bees have been added: verifying the queen has been released and accepted, checking for eggs, later checking for brood and a solid brood pattern, confirming the increasing bee numbers etc. Perfect weather and a truly entertaining group of people to spend the morning with.

James



MEET OUR CLUB OFFICERS

Rhonda Savva - Liaison Officer



Hello all members new and old. My Name is Rhonda Savva and I am your Liaison Officer. This is the first position I have held at Macarthur beekeepers.

I decided to be Liaison Officer so we could have a familiar face at the door to welcome all new members and to introduce them to our existing members (and I also love to have a chat!).

I am married to Sam and have 4 amazing adult children and even better 5 gorgeous grandchildren, ranging from 16 to 7.

I work full time at Coles in the Deli and have always worked in retail.

I started beekeeping by purchasing a Flow Hive in May 2018. It stayed on my verandah, ready to go until I had completed a course and watched way too many YouTube videos (and still do). I wanted to gain as much knowledge before I got my beautiful, unpredictable girls. I joined the Bee club in November 2018 and then purchased my girls, Christmas Eve 2018.

The reason I decided to keep bees is because I got tired of having to hand pollinate my pumpkins. I thought there must be an easier way, so I started looking into bees. I am a very keen gardener growing vegetables; I actually never grew flowers until I got my bees! My idea was if you can't eat it then why grow it. Lol. But of course, we all know we need a variety of things in our garden not only for ourselves but for all the little creatures who rely on us to feed them.

I currently have 2 Flow hives and 4.5 Langstroth hives but not all at my place. I have learnt more this year with help from the amazing members we have in our club. So please don't be afraid to ask questions. The only silly question is the one you didn't ask! My only regret is not starting beekeeping 10 plus years earlier.

Hobbies are spending time with my amazing family; gardening, sewing and reading.

So hopefully members, I will be able to start greeting everyone at the door at our meetings when things get back to normal after Covid.

Happy bee keeping
Rhonda



Tanya and I after we caught my swarm. Was a bit happy with ourselves!!

OCTOBER MEETING GUEST SPEAKER

Andrew B. Barron

Department of Biological Sciences, Macquarie University, Sydney



The hard life of the honey bee forager.

All of a bee hive's productivity depends on the efforts of its forager bees. Foraging for pollen and nectar has always been an energetically demanding and cognitively challenging task, but human induced changes to the environment are making this job even more difficult for forager bees. This lecture uses data gathered with state-of-the-art microsensors that track the activity of forager bees to describe just how hard forager bees work. New experiments analyse how pesticide residues in the environment affect foraging efficiency, and the consequences of compromised foraging efficiency for colony productivity.

Andrew Barron is a Professor and Australian Research Council Future Fellow at Macquarie University in Sydney. He is also a Leverhulme Visiting Professor at The University of Sheffield. Andrew has studied honey bee behaviour and neurobiology for 20 years, focusing on fundamental mechanisms of cognition, learning and social behaviour, and how current environmental stressors are impacting honey bee health.

BEE INFORMED

Member contributions/Research articles

American Foulbrood (AFB) found in Alice Springs

Last year, AFB was found for the first time in Northern Territory and has now been detected again in some hives owned by a hobby beekeeper. Authorities are trying to ensure it doesn't spread to the Top End. More info can be found:

<https://www.abc.net.au/radio/programs/nt-country-hour/american-foulbrood-found-in-alice-springs-bee-hives/12693768>

European Honeybees out compete native pollinators

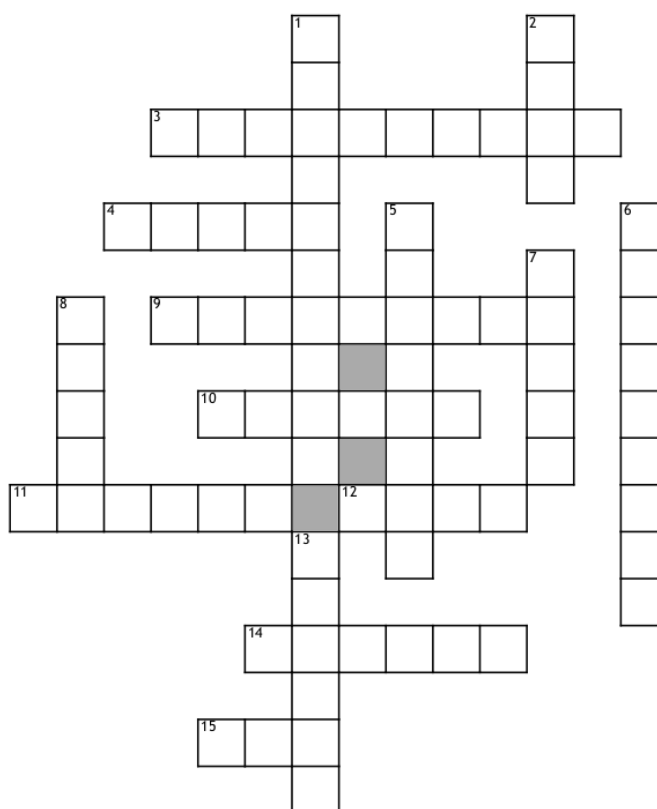
Feral honey bees, which have been in Australia for over 200 years, may be negatively impacting the ability of native bees to forage and pollinate native flora, especially where native floral resources are scarce. More research is needed to determine the "...effect that honeybee aggression had on the fitness of native bee population", said University of New England professor Caroline Gross. She said evidence wasn't clear cut and depended on the supply of resources and individual ecosystems. For more info:

<https://www.abc.net.au/news/rural/2020-10-02/feral-european-honeybees-outcompete-native-bees-top-end/12717608>

BEEKEEPER'S PUZZLE

Answers on the last page!

October Beekeepers Puzzle



Across

- 3. Wax sheet applied to wired frames
- 4. First name of the Club's new Apiary Officer
- 9. Used to spin frames to remove the honey
- 10. Term often used to describe the process for removing bees from a section of a building
- 11. Not a cigarette but a _____
- 12. Used to protect a beekeepers face
- 14. Surname of the Club's Library Officer
- 15. The usual number of Queens in a hive

Down

- 1. The Rev. _____ is attributed with invention of the current common bee hive
- 2. A fancy hive that uses a special key for extraction
- 5. A wire component used to separate the Queen in brood nest from the honey super
- 6. The bottom most section of a hive
- 7. A male bee
- 8. A group of bees with a queen who have left the hive to form a new colony
- 13. Used to protect a beekeepers hands

MEETINGS & EVENTS

Please check the calendar on the MBAI website for event updates: www.macbeekeepers.asn.au

Deadline for submissions for our next newsletter is Sunday 8th November.

Submit articles with photos separately (not embedded in the document) or advertisement requests to Christine at: macarthur.editor@Beekeepers.asn.au

PLEASE NOTE

Club meetings will continue to be held online via Google Meet till further notice.

NOVEMBER 2020

8th - Close for Newsletter

14th - Field Day

15th - Newsletter out

21st - Christmas Dinner

DECEMBER 2020

12th - Field Day

13th - Close for Newsletter

16th - Meeting 7:30pm

20th - Newsletter out

JANUARY 2021

9th - Field Day

10th - Close for Newsletter

17th - Newsletter out

20th - Meeting 7:30pm



Trying out foundation-less frames in a Flow Hive Hybrid super. - Rob

CLASSIFIEDS

Club Shirts

Contact Jessie or Michael at the next meeting
With Name \$65
Without Name \$60

Club Honey

Now available in 500gm
1 kg Tubs Contact Jessie on 0409845625

WANTED TO BUY
Large quantities of honey on a regular basis.
Call Mark on 0408 412 272

Newsletter Advertising Short line with phone nos. = Free, Size up to 60mm by 40mm (one per member) = Free. Non-member = \$10/per month Required to renew your ad each month. Provide artwork to: Macarthur.editor@macbeekeepers.asn.au

Club equipment available to Members

The following equipment is available for use by club members:

- A two-frame manual extractor.
- An electric uncapping knife.
- A Cappings draining tray set.

For use contact Michael or Jessie
Via email

Macarthur.treasurer@beekeepers.asn.au
Macarthur.vicepresident@beekeepers.asn.au

Or phone:

Michael on 0429368353 or
Jessie on 0409845625.

All equipment must be returned in a clean condition ready for the next user.

THANK YOU TO OUR SPONSORS!

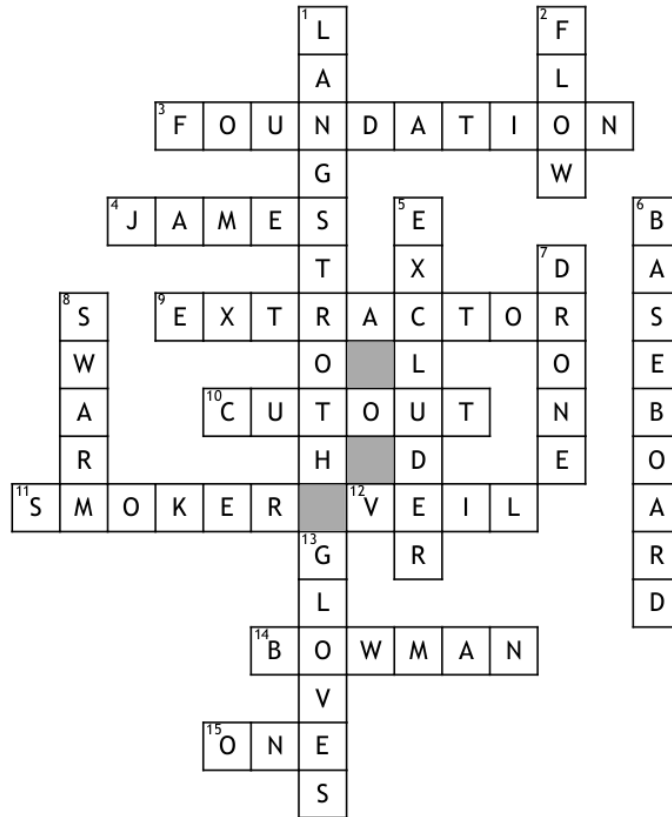


2 Queen St, Campbelltown, NSW 2560
Ph: 02 46267022
Trading Hours: 8.30am - 5.00pm



BEEKEEPER'S PUZZLE ANSWERS (PAGE 7)

October Beekeepers Puzzle



Across

- 3. Wax sheet applied to wired frames
- 4. First name of the Club's new Apiary Officer
- 9. Used to spin frames to remove the honey
- 10. Term often used to describe the process for removing bees from a section of a building
- 11. Not a cigarette but a _____
- 12. Used to protect a beekeepers face
- 14. Surname of the Club's Library Officer
- 15. The usual number of Queens in a hive

Down

- 1. The Rev. _____ is attributed with invention of the current common bee hive
- 2. A fancy hive that uses a special key for extraction
- 5. A wire component used to separate the Queen in brood nest from the honey super
- 6. The bottom most section of a hive
- 7. A male bee
- 8. A group of bees with a queen who have left the hive to form a new colony
- 13. Used to protect a beekeepers hands